

Print and SMD Switch Short Stroke 11.4 mm



SMS with Gullwing lead, IP40



SMS with adapter and elongated button, J-lead

See below:

Approvals and Compliances

Description

- Switches are possible with different heights
- High-quality gold and silver contacts
- Solder terminals

Unique Selling Proposition

- Reliable tactile feedback on input
- Simple assembly
- Long life time

Weblinks

[html datasheet](#), [General Product Information](#), [CAD-Drawings](#), [Product News](#), [Detailed request for product](#)

Technical Data

Electrical Data

| | |
|--------------------------|--|
| Switching Voltage | 30 VAC/ 42 VDC |
| Switching Current | 50 mA |
| Rated Switching Capacity | 0.12 W |
| Lifetime | > 1 million actuations at Rated Switching Capacity |
| Contact Resistance | < 50 mΩ < 150 mΩ after lifetime |
| Insulation Resistance | > 100 MΩ |
| Duration of Bounce | typ. 0.15 ms |

Mechanical Data

| | |
|-------------------|--|
| Actuating Force | IP40 : 1.8 ± 0.4 N IP67 : 2.2 ± 0.4 N |
| Actuating Travel | 0.35 ± 0.1 mm |
| End Stop Strength | < 100 N |
| Lifetime | > 1 million actuations |

Climatical Data

| | |
|-----------------------|-----------------|
| Operating Temperature | -40 °C to 85 °C |
| Storage Temperature | -40 °C to 85 °C |
| IP-Protection | IP40 and IP67 |

Soldering Data

| | |
|------------------------------|--|
| Soldering Methods | Reflow |
| Solderability | 245 °C / 5 sec (IEC 60068-2-58 Test Td) |
| Resistance to Soldering Heat | 260 °C / 10 sec (IEC 60068-2-58 Test Td) |

Material

| | |
|-----------------------|----------------------------|
| Sealing membrane IP67 | VMQ |
| Contact Material Gold | CuZn37 1.5 μm Ni 0.5 μm Au |
| Terminals | CuZn37 SnNi |
| Socket | Thermoplastic (PA 4.6) |
| Actuator | PA4 |
| Cover of Actuator | X 12 CrNi 17 7 |
| Elongated Button | Thermoplastic (PC) |

Approvals and Compliances

Detailed information on product approvals, code requirements, usage instructions and detailed test conditions can be looked up in [Details about Approvals](#)

SCHURTER products are designed for use in industrial environments. They have approvals from independent testing bodies according to national and international standards. Products with specific characteristics and requirements such as required in the automotive sector according to IATF 16949, medical technology according to ISO 13485 or in the aerospace industry can be offered exclusively with customer-specific, individual agreements by SCHURTER.

Application standards

Application standards where the product can be used

| Organization | Design | Standard | Description |
|--------------|--------------------------------|--------------|---|
| | Designed for applications acc. | IEC/UL 60950 | IEC 60950-1 includes the basic requirements for the safety of information technology equipment. |

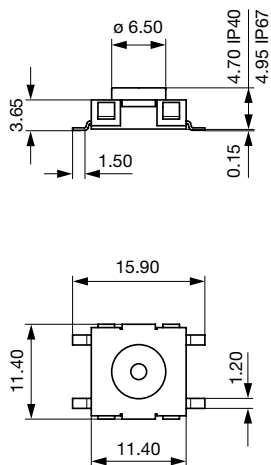
Compliances

The product complies with following Guide Lines

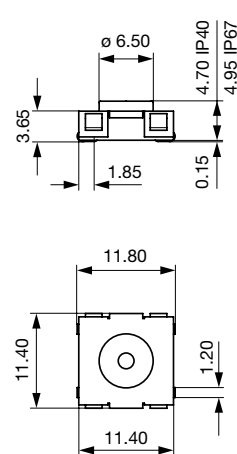
| Identification | Details | Initiator | Description |
|--|------------|-------------|---|
|  | RoHS | SCHURTER AG | Directive RoHS 2011/65/EU, Amendment (EU) 2015/863 |
|  | China RoHS | SCHURTER AG | The law SJ / T 11363-2006 (China RoHS) has been in force since 1 March 2007. It is similar to the EU directive RoHS. |
|  | REACH | SCHURTER AG | On 1 June 2007, Regulation (EC) No 1907/2006 on the Registration, Evaluation, Authorization and Restriction of Chemicals 1 (abbreviated as "REACH") entered into force. |

Dimension [mm]

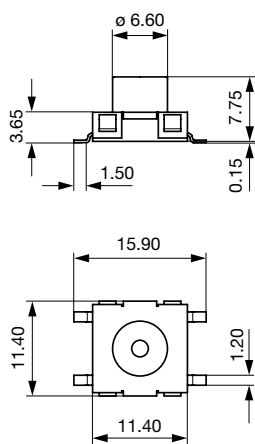
SMS Gullwing Base module



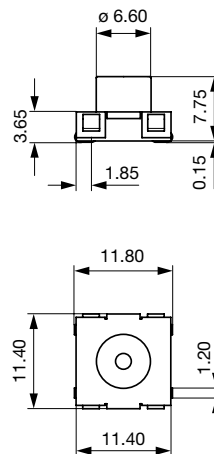
SMS J-lead Base module



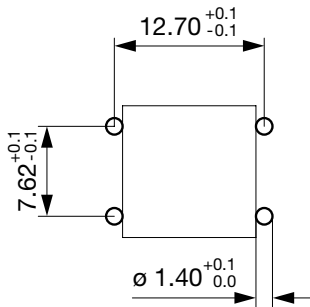
SMS Gullwing Variable height



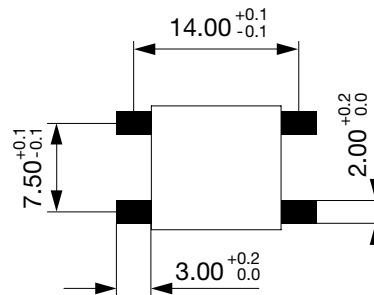
SMS J-lead Variable height



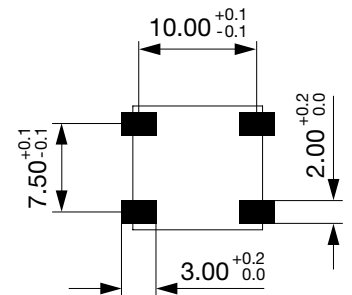
PCP Lead



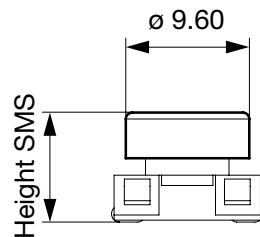
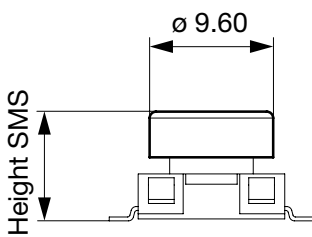
Gullwing Lead



J-Lead

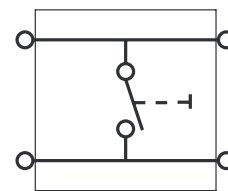
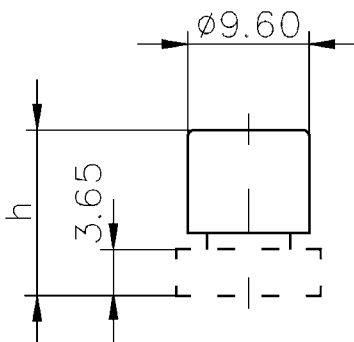


SMS Gullwing with elongated button SMS J lead with elongated button



Diagrams

Circuit Diagram SMS/PMS



All Variants

| IP Protection Class Front Side | Terminal | Type | Overall height / Color | Order Number |
|--------------------------------|----------|----------------|------------------------|--------------|
| IP40 | Gullwing | Short actuator | - | 1241.1600.11 |
| IP40 | Gullwing | Short actuator | - | 1241.1600.23 |
| IP40 | Gullwing | Long actuator | - | 1241.1612.11 |
| IP40 | Gullwing | Long actuator | - | 1241.1612.23 |
| IP40 | J-Lead | Short actuator | - | 1241.1601.11 |
| IP40 | J-Lead | Short actuator | - | 1241.1601.23 |

| IP Protection Class Front Side | Terminal | Type | Overall height / Color | Order Number |
|--------------------------------|----------|-------------------------|------------------------|--------------|
| IP40 | J-Lead | Long actuator | - | 1241.1613.11 |
| IP40 | J-Lead | Long actuator | - | 1241.1613.23 |
| IP67 | Gullwing | Short actuator | - | 1241.1606.11 |
| IP67 | Gullwing | Short actuator | - | 1241.1606.23 |
| IP67 | Gullwing | Long actuator | - | 1241.1618.11 |
| IP67 | Gullwing | Long actuator | - | 1241.1618.23 |
| IP67 | J-Lead | Short actuator | - | 1241.1607.11 |
| IP67 | J-Lead | Short actuator | - | 1241.1607.23 |
| IP67 | J-Lead | Long actuator | - | 1241.1619.11 |
| IP67 | J-Lead | Long actuator | - | 1241.1619.23 |
| - | - | Elongated button | 8.50 mm / yellow | 0862.8101 |
| - | - | Elongated button | 9.25 mm / orange | 0862.8102 |
| - | - | Elongated button | 10.00 mm / red | 0862.8103 |
| - | - | Elongated button | 10.75 mm / blue | 0862.8104 |
| - | - | Elongated button | 11.50 mm / green | 0862.8105 |
| - | - | Elongated button | 12.25 mm / grey | 0862.8106 |
| - | - | Elongated button | 13.00 mm / black | 0862.8107 |
| - | - | Elongated button | 13.75 mm / white | 0862.8108 |
| - | - | Second elongated button | - | 0862.8226 |

Most Popular.

Availability for all products can be searched real-time: <https://www.schurter.com/en/Stock-Check/Stock-Check-SCHURTER>

Additional elongated button for long actuators must be ordered separately

From 14:50 mm an additional (second) elongated button for intermediate sizes (h + 6 mm) is required. This must be ordered separately

| Packaging unit | |
|----------------|------------|
| .xx = .11 | (100 pcs.) |
| .xx = .23 | (700 pcs.) |
| .xx = .23 | (450 pcs.) |