

INTERFACE BLOCKS

RECEIVER

170-pol Signal block

Order number	Designation
585015	IFB R - 170 - Pk W <i>WireWrap</i>
585045	IFB R - 170 - Pk L <i>Solderconnection</i>
585046	IFB R - 170 - Pk R <i>Round</i>

- Receiver block 170-polig / pyramid small (Pk)
- Material: 6mm EGS619
- Spring contac -head shape = pyramid small (*RSP 2T*)
- Receptacle with WireWrap aligned/ Solder- / Round connection
- Tip height = 6,2mm
- Recommend stroke: 2,6mm
- Grid dimensions = 2,54mm
- Max. current rating 1A

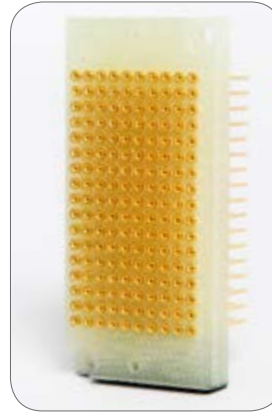


FIXTURE SIDE

170-pol Signal block

Order number	Designation
585040	IFB I - 170 - IKo6 - W - A <i>aligned</i>

- Fixture block 170-polig / small inner cone (IKo6)
- Material: 6mm EGS619
- Contact with inner cone 0,6mm (IKo6 - *IF55 / gilded*)
- Connection via WireWrap
- Grid dimensions = 2,54mm
- Max. current rating 1A



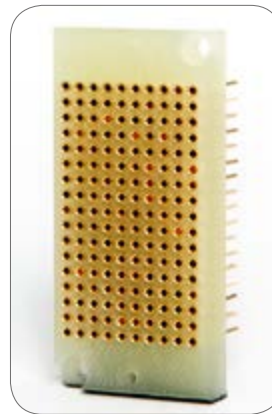
Order number	Designation
585042	IFB R - 170 - Pg W <i>WireWrap</i>
585049	IFB R - 170 - Pg L <i>Solderconnection</i>
585050	IFB R - 170 - Pg R <i>Round</i>

- Receiver block 170-polig / pyramid large (Pg)
- Material: 6mm EGS619
- Spring contac -head shape = pyramid large (*IP 541T*)
- Receptacle with WireWrap aligned/ Solder- / Round connection
- Tip height = 6,2mm
- Recommend stroke: 2,6mm
- Grid dimensions = 2,54mm
- Max. current rating 1A



Order number	Designation
585039	IFB I - 170 - IK10 - W - A <i>aligned</i>

- Fixture block 170-polig / large inner cone (IK10)
- Material: 6mm EGS619
- Contact with inner cone 1,0mm (IK10 - *SIP 90-3*)
- Connection via WireWrap
- Grid dimensions = 2,54mm
- Max. current rating 1A



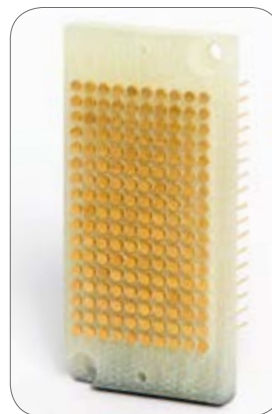
Order number	Designation
585010	IFB R - 170 - D W <i>WireWrap</i>
585051	IFB R - 170 - D L <i>Solderconnection</i>
585052	IFB R - 170 - D R <i>Round</i>

- Receiver block 170-polig / dagger (D)
- Material: 6mm EGS619
- Spring contac -head shape = dagger (*GP 541 B*)
- Receptacle with WireWrap aligned/ Solder- / Round connection
- Tip height = 5,2mm
- Recommend stroke: 2,6mm
- Grid dimensions = 2,54mm
- Max. current rating 1A



Order number	Designation
585041	IFB I - 170 - P - W - A <i>aligned</i>

- Fixture block 170-polig / plan (P)
- Material: 6mm EGS619
- Contact = plan (*SIP 90-2*)
- Connection via WireWrap
- Grid dimensions = 2,54mm
- Max. current rating 1A



RECEIVER

136-pol Signal block

Order number	Designation
585047	IFB R - 136 - Pk W <small>WireWrap</small>

- Receiver block 136-polig / pyramid small (Pk)
- Material: 6mm EGS619
- Spring contac -head shape = pyramid small
- Receptacle with WireWrap aligned
- Tip height = 4,3mm
- Recommend stroke: 2,6mm
- Grid dimensions = 2,54mm
- Max. current rating 1A

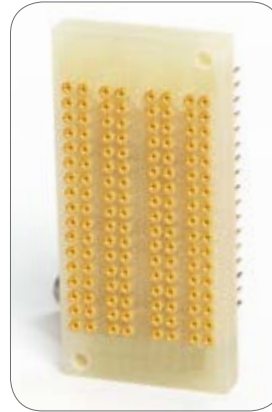


FIXTURE SIDE

136-pol Signal block

Order number	Designation
585048	IFB I - 136 - IKo6 W <small>WireWrap</small>

- Fixture block 136-polig / small inner cone (IKo6)
- Material: 6mm EGS619
- Contact with inner cone 0,6mm (IKo6)
- Connection via WireWrap
- Grid dimensions = 2,54mm
- Max. current rating 1A



Order number	Designation
300071	IFB R - 136 - D W <small>WireWrap</small>

- Receiver block 136-polig / dagger (D)
- Material: 6mm EGS619
- Spring contac - head shape = dagger
- Receptacle with WireWrap aligned
- Tip height = 7,6mm
- Recommend stroke: 2,6mm
- Grid dimensions = 2,54mm
- Max. current rating 1A



Order number	Designation
300073	IFB I - 136 - P W <small>WireWrap</small>

- Fixture block 136-polig / plan (P)
- Material: 6mm EGS619
- Contact = plan
- Connection via WireWrap
- Grid dimensions = 2,54mm
- Max. current rating 1A



RECEIVER

- IFB = Interface block
- R = Receiver
- 170 = Amount of contacts
- Pk / Pg / D = Head shape
- WW / L / R = Receptacle pin
- HS = High current / addition
- 4A = Value

FIXTURE SIDE

- IFB = Interface block
- I = ITA / Fixture side
- 170 = Amount of contacts
- IK / P = Head shape
- W = Contact connection
- HS = High current / addition
- 4A = Value

RECEIVER

85-pol Signal block

Order number	Designation
585060	IFB R - 085 - Pk W <i>WireWrap</i>
585044	IFB R - 085 - Pk L <i>Solderconnection</i>

- Receiver block 85-polig / pyramid small (Pk)
- Material: 6mm EGS619
- Spring contac -head shape = pyramid small
- Receptacle with WireWrap aligned/ Solder connection
- Tip height = 6,2mm
- Recommend stroke: 2,6mm
- Grid dimensions = 2,54mm
- Max. current rating 1A

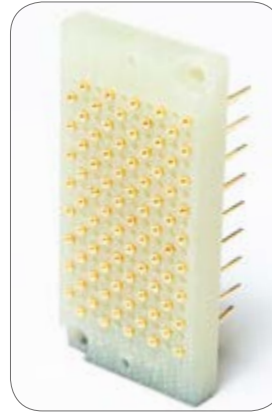


FIXTURE SIDE

85-pol Signal block

Order number	Designation
585056	IFB I - 085 - IKo6 W <i>aligned</i>

- Fixture block 85-polig / small inner cone (IKo6)
- Material: 6mm EGS619
- Contact with inner cone 0,6mm (IKo6 - *IF55 / gilded*)
- Connection via WireWrap
- Grid dimensions = 2,54mm
- Max. current rating 1A



Order number	Designation
585059	IFB R - 085 - D W <i>WireWrap</i>
585062	IFB R - 085 - D L <i>Solderconnection</i>

- Receiver block 85-polig / dagger (D)
- Material: 6mm EGS619
- Spring contac -head shape = dagger (*GP 541 B*)
- Receptacle with WireWrap aligned/ Solder connection
- Tip height = 5,2mm
- Recommend stroke: 2,6mm
- Grid dimensions = 2,54mm
- Max. current rating 1A



Order number	Designation
585061	IFB I - 085 - P W <i>Solderconnection</i>

- Fixture block 85-polig / plan (P)
- Material: 6mm EGS619
- Contact = plan (*SIP 90-2*)
- Connection via WireWrap
- Grid dimensions = 2,54mm
- Max. current rating 1A



RECEIVER

40-pol Signal block

Order number	Designation
585017	IFB R - 40 - Pk W <small>WireWrap</small>

- Receiver block 40-polig / pyramid small (Pk)
- Material: 6mm EGS619
- Spring contact -head shape = pyramid small
- Receptacle with WireWrap aligned
- Tip height 4,3mm
- Air distance (not wired) 3,18mm
- Recommend stroke: 2,6mm
- Max. current rating 3A



FIXTURE SIDE

40-pol Signal block

Order number	Designation
585019	IFB I - 40 - IKo6 W <small>WireWrap</small>

- Fixture block 40-polig / small inner cone (IKo6)
- Material: 6mm EGS619
- Contact with inner cone 0,6mm (IKo6 - [KT-158 06](#))
- Connection via WireWrap
- Max. current rating 3A



RECEIVER

- IFB = Interface block
- R = Receiver
- 170 = Amount of contacts
- Pk / Pg / D = Head shape
- WW / L / R = Receptacle pin
- HS = High current / addition
- 4A = Value

FIXTURE SIDE

- IFB = Interface block
- I = ITA / Fixture side
- 170 = Amount of contacts
- IK / P = Head shape
- W = Contact connection
- HS = High current / addition
- 4A = Value

RECEIVER

8-pol High current block

Order number	Designation
585034	IFB R - 008 - P L - HS 50A

- Loaded with KS-150 M3
- Loaded with HSS-150 317 300 A 5002 M
- Power stroke 4,4mm
- Air distance (not wired) 1,6mm
- Max. current rating 50A
- Max. current rating all Test Probes 25A
- Max. power loss *: 25W
- Connection via cable lug



FIXTURE SIDE

8-pol High current block

Order number	Designation
585035	IFB I - 008 - IK L - HS 50A

- Loaded with KT-150 L3 E03-M3



24-pol High current block

Order number	Designation
585043	IFB R - 024 - P L - HS 24A

- Loaded with KS-113 30 M2R
- Loaded with HSS-120 317 300 A 2202 M
- Power stroke 4,0mm
- Air distance (not wired) 2,4mm
- Max. current rating 24A
- Max. current rating all Test Probes 16A
- Max. power loss *: 25W
- Connection via Solder connection



24-pol High current block

Order number	Designation
585024	IFB I - 024 - IK L - HS 24A

- Loaded with KT-120 L3 E02-30



32-pol High current block

Order number	Designation
281063	IFB R - 032 - W L - HS

- Loaded with waffle (VGRCB-32P)
- Tension 250VAC
- Power 20A
- Contact resistance 5mΩ
- Absorbing capacity 21pf
- Inductance 3nH
- Stability 25,000 cycle
- Solder connection
- Max. power loss *: 25W



32-pol High current block

Order number	Designation
281070	IFB I - 032 - P L - HS

- Loaded with planem IF-Contact (VGFCB-32P)



RECEIVER

45-pol High current block

Order number	Designation
585023	IFB R - 045 - P L - HS 24A

- Loaded with KS-113 30 M2R
- Loaded with HSS-120 317 300 A 1502 M
- Power stroke 4,0mm
- Air distance (not wired) 1,48mm
- Max. current rating 24A
- Max. current rating all Test Probes 10A
- Max. power loss *: 25W
- Connection via Solder connection

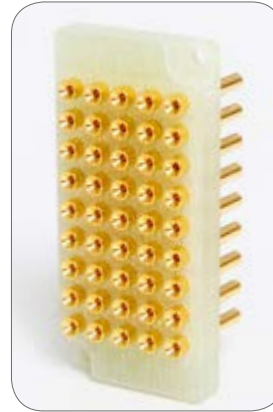


FIXTURE SIDE

45-pol High current block

Order number	Designation
585029	IFB I - 045 - IK L - HS 24A

- Loaded with KT-120-L3 E02-30



* Please consider that the maximum current rate is valid for the use of a single pin. Using multiple pins the maximum current rate per pin is decreased because of the heat resulting by the contact resistance. It can be assumed a maximum power loss of 25W.

Formular of calculation:

$$P = I^2 \cdot R_i$$

RECEIVER

8-pol Pneumatikblock

Order number	Designation
585057	IFB R - 008 - open - Brass

- Loaded with KSV-PK-3 ([462011](#))



FIXTURE SIDE

8-pol Pneumatikblock

Order number	Designation
585055	IFB I - 008 - open - Brass

- Loaded with KDV-PK-3 ([460043](#))



Order number	Designation
469028	IFB R - 008 - disabled - Synthetic

- With bushing contact with shutoff device HAH-High current bushing ([278256](#))



Order number	Designation
469025	IFB I - 008 - open - Synthetic

- With pin contact HAH-Modul open ([278255](#))



13-pol Pneumatikblock

Order number	Designation
281084	IFB R - 013 - open - Brass

- Loaded with KSV-PK-6 ([VGRCB-13 Pneu](#))



13-pol Pneumatikblock

Order number	Designation
283121	IFB I - 013 - open - Brass

- Loaded with KDV-PK-6 ([VGFCB-13 Pneu](#))



RECEIVER

13-pol Coax block

Order number	Designation
281062	IFB R - 13 - Koax

- (VGRCB-13C)
- Tension 250VAC
- Power 5A
- Contact resistance 39mΩ
- Impedance 50Ω
- Line resources 3,7GHz (-3db)
- Absorbing capacity 8,8pf
- Inductance 42mH
- Stability 25,000 cycle
- Grid connection SMB
- Max. power loss *: 25W



FIXTURE SIDE

13-pol Coax block

Order number	Designation
281068	IFB I - 13 - Koax

- (VGFCB-13C)



Special block

Order number	Designation
585058	IFB I - Kombi

- Loaded with 2 pcs KDV-PK-3
1 pcs special pressure connecti-
on 66 pcs Sip 90-3



* Please consider that the maximum current rate is valid for the use of a single pin. Using multiple pins the maximum current rate per pin is decreased because of the heat resulting by the contact resistance. It can be assumed a maximum power loss of 25W.

Formular of calculation:

$$P = I^2 \cdot R_i$$

RECEIVER

Combi block

Order number	Designation
585073	IFB R - 6 - NET - Body

- For 2 x USB 2.0 oder 3.0 + 2 x LAN + 2 x Pneumatic
- Empty body without contact parts



Contact parts:

- (278256) Pneumatic: HAN pressurized air module locked
- (585075) USB 2 and 3.0: Female size 0 shielded, 10 pole (USB 3.0) cord set 250mm with USB3.0 Connector Type A (USB 2.0 compatible)
- (585077) USB 2: Female size 0 shielded, 4 pole (USB2) cord set 250mm with USB2 Connector Type A
- (585079) Lan - 10 Gigabit Ethernet: Female size 2 shielded, 8 pole (CAT6A) cord set 250mm with RJ45 Connector
- (585083) USB 2 and 3.0: Female size 0 shielded, 10 pole (USB 3.0) cord set 2000mm with USB3.0 Connector Type A (USB 2.0 compatible)
- (585086) USB 2: Female size 0 shielded, 4 pole (USB2) cord set 2000mm with USB2 Connector Type A
- (585081) Lan - 10 Gigabit Ethernet: Female size 2 shielded, 8 pole (CAT6A) cord set 2000mm with RJ45 Connector

FIXTURE SIDE

Combi block

Order number	Designation
585074	IFB I - 6 - NET - Body

- For 2 x USB 2.0 oder 3.0 + 2 x LAN + 2 x Pneumatic
- Empty body without contact parts



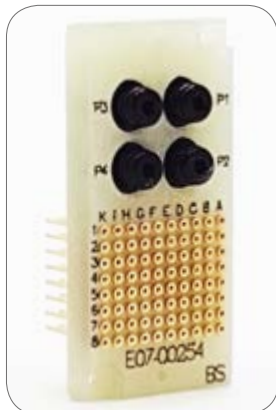
Contact parts:

- (278255) Pneumatik: HAN pressurized air module pin side
- (585076) USB 2 and 3.0: Male size 0 shielded, 10 pole (USB 3.0) cord set 250mm with USB3.0 Connector Type A (USB 2.0 compatible)
- (585078) USB 2: Male size 0 shielded, 4 pole (USB 2) cord set 250mm with USB2 Connector Type A
- (585080) Lan - 10 Gigabit Ethernet: Female size 2 shielded, 8 pole (CAT6A) cord set 250mm with RJ45 Connector
- (585084) USB 2 and 3.0: Male size 0 shielded, 10 pole (USB 3.0) cord set 2000mm with USB3.0 Connector Type A (USB 2.0 compatible)
- (585085) USB 2: Male size 0 shielded, 4 pole (USB 2) cord set 2000mm with USB2 Connector Type A
- (585082) Lan - 10 Gigabit Ethernet: Female size 2 shielded, 8 pole (CAT6A) cord set 2000mm with RJ45 Connector

80-4 pol Comib block

Order number	Designation
585113	IFB R - 080 - 04 - Combi - locked

- Loaded with SPR-2W-2
- Loaded with t RSP-2T
- Pneumatic: Hand Female locked
- Grid: 10mm - 10mm
- Material: GFK



80-4 pol Comib block

Order number	Designation
585114	IFB I - 080 - 04 - Combi

- Loaded with SIP Contact (IK06 / IF55)
- Pneumatic: Hand male
- Grid: 10mm - 10mm
- Material: GFK



RECEIVER

RCVR/Systemblock

Order number	Designation
585087	IFB R - 21 - VTAC - Body

- High Speed VTAC 21pol empty 906021RVT



Contact parts::

- (585089) VTAC HSD RCVR signal cord set 900 mm USB 3.0 Typ A Male VPC7-142890690-036
- (585091) VTAC HSD RCVR signal cord set 900 mm USB 3.0 Typ A Female VPC7-142890691-036
- (585093) VTAC RCVR USB 3.0 signal cord set 900 mm Typ B Male VPC7-142890692-036
- (585095) VTAC HSD signal cord set 900 mm RJ45 VPC7-142893694-036
- (585097) VTAC, Blank Insert Kit (10 pcs.) RCVR/ITA VPC610151102
- (585098) VTAC HSD Extraction Tool for RCVR and ITA

FIXTURE SIDE

ITA/Adapterblock

Order number	Designation
585088	IFB I - 21 - VTAC - Body

- High Speed VTAC 21pos. empty 906021IVT



Contact parts::

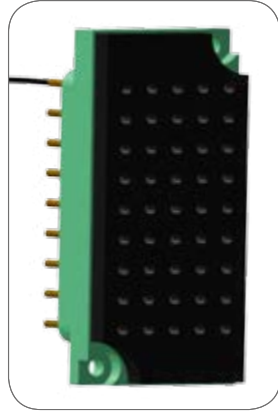
- (585090) VTAC HSD ITA signal cord set 900 mm USB 3.0 Typ A Male VPC7-141890690-036
- (585092) VTAC HSD ITA signal cord set 900 mm USB 3.0 Typ A Female 7-141890691-036
- (585094) VTAC HSD ITA signal cord set 900 mm USB 3.0 Typ B Male 7-141890692-036
- (585096) VTAC HSD ITA signal cord set 900 mm auf RJ45 VPC7-141893694-036
- (585097) VTAC, Blank Insert Kit (10 pcs.) RCVR/ITA VPC610151102
- (585098) VTAC HSD Extraction Tool for RCVR and ITA

RECEIVER

Fibre optics block

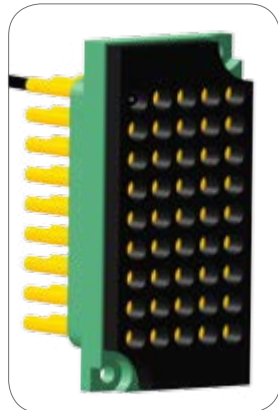
Order number	Designation
585104	IFB R - 045 - LWL - 1mm

- Loaded with 45x Receptacle LA-REC-10 ([562016](#))
- Light separation sealing



Order number	Designation
585106	IFB R - 045 - LWL - 2,2mm

- Loaded with 45 x Receptacle KS-220 ([681014](#))
- Light separation sealing

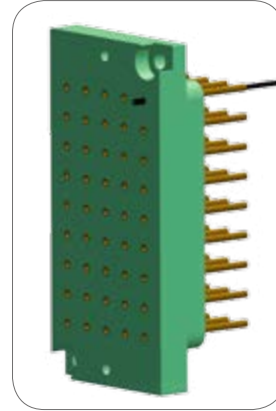


FIXTURE SIDE

Fibre optics block

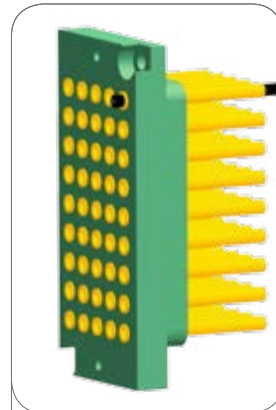
Order number	Designation
585103	IFB I - 045 - LWL - 1mm

- Loaded with 45 x Receptacle LA-REC-10 ([562016](#))



Order number	Designation
585105	IFB I - 045 - LWL - 2,2mm

- Loaded with 45 x Receptacle KS-220 ([681014](#))



Contact us



Would you like to find out more about us or get in touch with the appropriate contact person?
You'll find the direct line on our website - together with your personal sales expert:

www.atx-hardware.de ▶ Contact ▶ Contact partner

We are committed to finding the optimal technical solution for you. Why not put us to the test!



ATX Hardware GmbH West
Subsidiary of ATX Hardware GmbH

Pürgen branch
Am Kornfeld 8
86932 Pürgen, Deutschland/Germany

Phone: +49 81 96 / 93 04 - 0
Telefax: +49 81 96 / 93 04 - 19

Email: projekte@atx-hardware.de
Web: www.atx-hardware.de

Weil branch
Carl-Zeiss-Straße 5/1
71093 Weil im Schönbuch, Deutschland/Germany

Phone: +49 81 96 / 93 04 - 345 or 349
Telefax: +49 81 96 / 93 04 - 359

Email: projekte@atx-hardware.de
Web: www.atx-hardware.de