

% 20 50

1. 1

2.

3.

- **RG3:** 473 0.01
- **RG3-M:** 473 0.01

4. (1)

5. « »

6. 5/64

1/4

7.

© 2005–2010 Onset Computer Corporation. Onset, HOBOWare – Onset Computer Corporation.

: MAN-RG3/RG3-M
: 10241-C

RG3 RG3-M



.....2

.....2

.....4

.....4

.....5

.....6

.....6

.....7

.....7

.....7

.....7

.....8

.....9

.....11

« ».....11

Onset Computer Corporation.

- : RG3 RG3-M
- : 2 , 3
-
- USB , : BASE-U-1
- Onset HOBOWare® 2.1

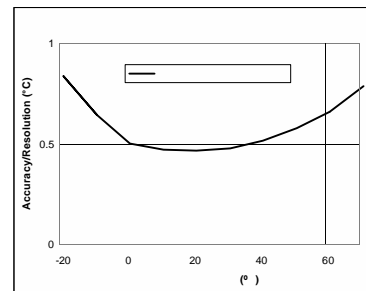
	127
	±1.0% (20 / RG3-M)
	0.2 (RG3-M)
	" :
	0° +50°C
	-20° +70°C
	15.24
	25.72 x 15.24 15.39
	1.2
	RG3 (0.01) RG3-M (0.2)
CE	CE ,

3. ,
 4. .
 5.
 - a. .
 - b. ,
 - c. ,
 - d. ,
 - e. .
 - f. ,
- » . « »
- (36 « »).
- » , « »
- 50 % () .
- 50 %

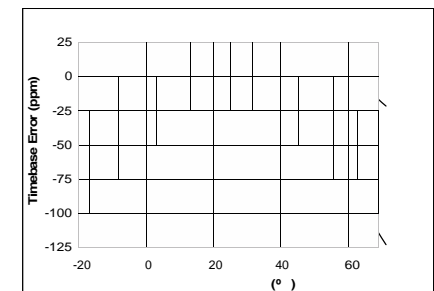
HOBO

	: 1,0
	± 1 25°C, B
	: -20° 70°C
()	NEMA 6 IP67;
NIST	; -20° 70°C
	CR-2032 3 ; . 1
	64 - 16 23 ; 25 30 ; . 7.
	; ;
	CE ,

(. , . 5)	
	: -20° 70°C
	$\pm 0.54^\circ\text{C}$ 0° 50°C, A.
	0.10°C 25°C, A.
	0.1°C/
	: 1 / : 10 90%



A



B

- 1.
- 2.
- 3.
- 4.
- 5.
- 6.

16.99

16

- 1.
- 2.

Event/Temperature Data Logger.

HOBO®

0.01" (RG3) 0.2 (RG3-M)

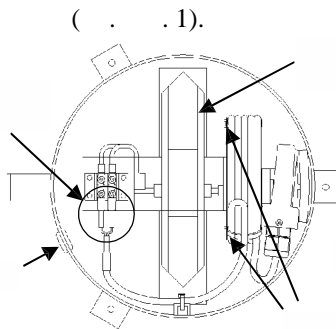
Event/Temperature data logger,

HOBO

16 000 10-

USB

HOBOWare.

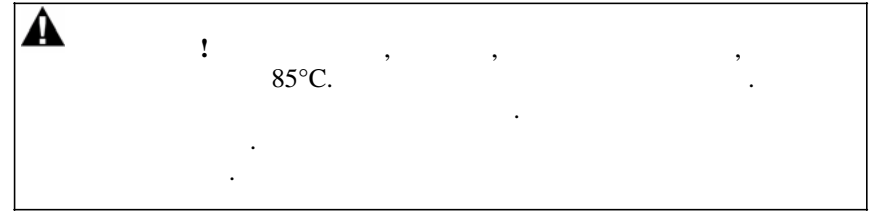


1.

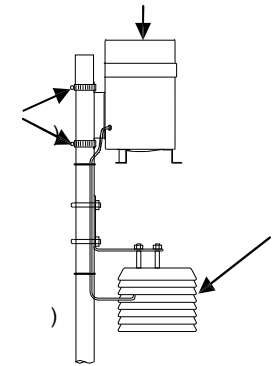
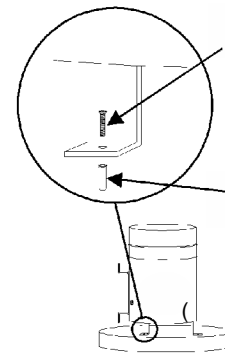
() ()

5.
6.

7.



(. .5 6).



5.

6.

« ».

«

».

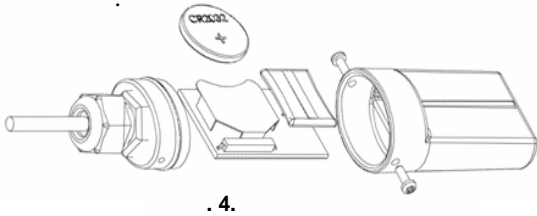
30°C	
30° 40°C	
40°C	

<http://www.onsetcomp.com/support/support.html>

2032.

CR-

1. . 4.



2.

3.

4.

. 1.

(. 1).

(Onset).

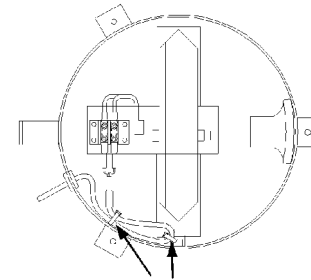
1.

2.

3.

4.

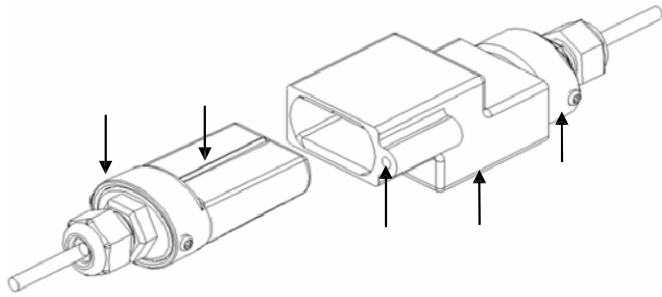
. 2).



. 2.

(BASE-U-1), USB HOBOWare 2.1 0°C
50°C.

1. USB
2. USB



.3.

3.

4.

1. *Trigger Start.*

2.

!

3.

(!)

4.

U

2.7 ,

2.8 ,

:	:
	1 4 ();
	8

64

3 12
(16 000
32
16 ,)
22 (23 000
30 000)
25 000 /
()