



() 100
()

IEC 60065 . 14,6

	5E4
()	100 A
3	
()	< 100 (1 A 12)
()	> 100 (500)
	250 PTI
	IP 40
	-20 °C ... +100 °C -20 °C ...
+55 °C	UL 94 V-2 UL 94 V-0 ()
	850 °C
	PA / PA C3U PA / PA C3U
,	80
	■



/ (SPST)				16 (4) A 250 (.) 5E4	16 (4) A 250 (.) 1E4	10 (4) A 250 (.) 5E4	10 A	12	20 250 (.) 5E4	20 A 250 (.) 2 HP	20 A 125 (.) 1 HP	16 A 250 (.) 2 HP			EN 60335 . 30	"G"	
1550.3102	230			*	*					*				6.3	Ag		
1550.3105	12						*							6.3	Ag		
1550.3609	12						*							6.3	Ag		
1551.2602				*	*					*	*				Ag		
1551.3102				*	*					*	*			6.3	Ag	*	
1551.3103				*	*					*	*			6.3	Ag		
1551.3105				*	*					*	*			6.3	Ag		
1551.3106				*	*					*	*			6.3	Ag		
1551.4803				*	*					*	*				Ag	* 2	
1551.2654							*								Au	KEMA	
1552.0102				*	*					*	*				Ag	*	
- (SPNC)																	
1581.1303				*						*	*			6.3	Ag	*	
1551.1303				*	*					*	*			6.3	Ag		
- (SPNC)																	
1551.3202				*	*					*	*			6.3	Ag		
1551.3702				*	*					*	*			6.3	Ag		

/ (DPST)				16 (4) A 250 () 5E4	16 (4) A 250 () 1E4	10 (4) A 250 () 5E4	10 A	12	20 250 () 5E4	20 A 250 () 2 HP	20 A 125 () 1 HP	16 A 250 () 2 HP			EN 60335 . 30		
1555.3102	230			*	*				*	*	*			6.3	Ag	*	*
1555.3104	230			*	*						*			6.3	Ag		*
1555.3108	230			*	*						*			6.3	Ag		*
1555.3604	230			*	*						*			6.3	Ag		
1555.4608	230			*	*						*				Ag		
1555.8104	230			*	*						*			6.3	Ag		31.5 x 17
1555.3125	115			*	*				*	*	*			6.3	Ag	*	
1555.4628	115										*				Ag		
1555.3109	110										*			6.3	Ag		
1555.3109	110										*			6.3	Ag		
1555.3109	12						*				*			6.3	Ag		
1552.2601				*	*						*	*			Ag		
1552.2602				*	*						*	*			Ag	*	
1552.3102				*	*						*	*		6.3	Ag		*
1552.3104				*	*						*	*		6.3	Ag		
1552.3112				*	*						*	*		6.3	Ag	*	EN 60065 . 14.6
1552.3117				*	*			*	*	*	*			6.3	Ag	*	
1552.3120				*	*						*	*		6.3	Ag		
1552.3602				*	*						*	*		6.3	Ag		
1552.4602				*	*						*	*			Ag		
1552.4702				*	*						*	*			Ag	2	
1552.4802				*	*						*	*			Ag		

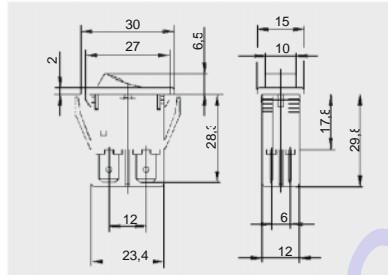
*

*

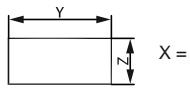
*



1550 1555



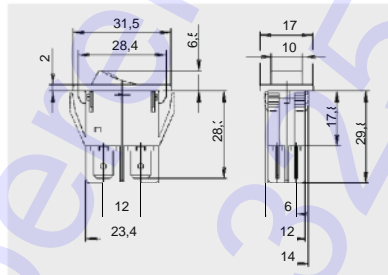
.6.3 x .0,8



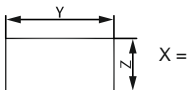
X	Y	*
0,8 ... 5,0	27,2 ^{-0,1}	12,2 ^{+0,2}



1555.8104



.6.3 x .0,8



X	Y	*
0,8 ... 5,0	28,6	14 ^{+0,2}