

onset[®]

HOBOWare

onsetcomp.com

.....	3
.....	3
HOBOWare	3
.....	4
HOBOWare	4
,	4
.....	4
.....	4
HOBOWare Setup Assistant (HOBOWare Pro).....	5
.....	5
USB	5
/	5
(HOBOWare Pro).....	6
.....	7
.....	8
.....	8
.....	9
.....	9

Onset 1-800-LOGGERS <http://www.onsetcomp.com/legal> Onset

Onset. , : Onset Computer Corporation

Onset Computer Corporation
470 MacArthur Blvd.
Bourne, MA 02532

:
P.O. Box 3450
Pocasset, MA 02559-3450

: 1-800-LOGGERS (1-800-564-4377) 508-759-9500
: 508-759-9100
: 8 5 ,

E-mail: loggerhelp@onsetcomp.com
Onset: <http://www.onsetcomp.com>

© 2009–2010 Onset Computer Corporation.

Onset, HOBO, HOBOLink, HOBOWare Onset Computer Corporation,

Microsoft, Windows Excel Microsoft Corporation.

Macintosh – Apple Inc.

Java - Sun Microsystems, Inc.

KeySpan – InnoSys Inc

Part #: MAN-BHW-GS
Doc #: 12284-D

1. HOBOWare
- 2.
- 3.
- 4.
- 5.
- 6.

HOBOWARE

README

<http://www.onsetcomp.com/support>.

HOBOWare,

HOBOWare License Key Manager.

License Key Manager, Help > License Key.

HOBOWare, License Key Manager

Windows

1. HOBOWare_Setup.exe.
- | | | | | |
|-------------|----------------|---------|------------------------------|----------------------------|
| Environment | HOBOWare | Windows | Java™ 2 Runtime Environment. | Java 2 Runtime Environment |
| Environment | HOBOWare Setup |) | Yes | Java 2 Runtime Environment |
| Environment | HOBOWare | | | Java 2 Runtime Environment |
2. HOBOWare.
- HOBOWare
- HOBOWare Applications > HOBOWare. > Onset

Macintosh

- 1.
2. CD HOBOWare.pkg
3. Restart.
4. HOBOWare, HOBOWare.

HOBOWare Setup Assistant (HOBOWare Pro)

HOBOWare Pro,

HOBOWare Setup Assistant,
Setup Assistant **Start**

HOBOWare Setup Assistant – **Cancel,**

- – USB (Serial Devices) (HOBOWare Pro)
- –
- (Data Assistants) –

Windows: File > Preferences

Macintosh: HOBOWare > Preferences

USB

USB

- HOBOWare Pro:

1. HOBOWare
2. USB USB
3. USB USB , .

– **Windows.** , , ,

– **Windows.** .

HOBOWare ,

USB .

/

USB / .

– **Windows.** , , ,

– **Windows.** .

1. HOBOWare
2. / USB
3. HOBOWare
4. USB

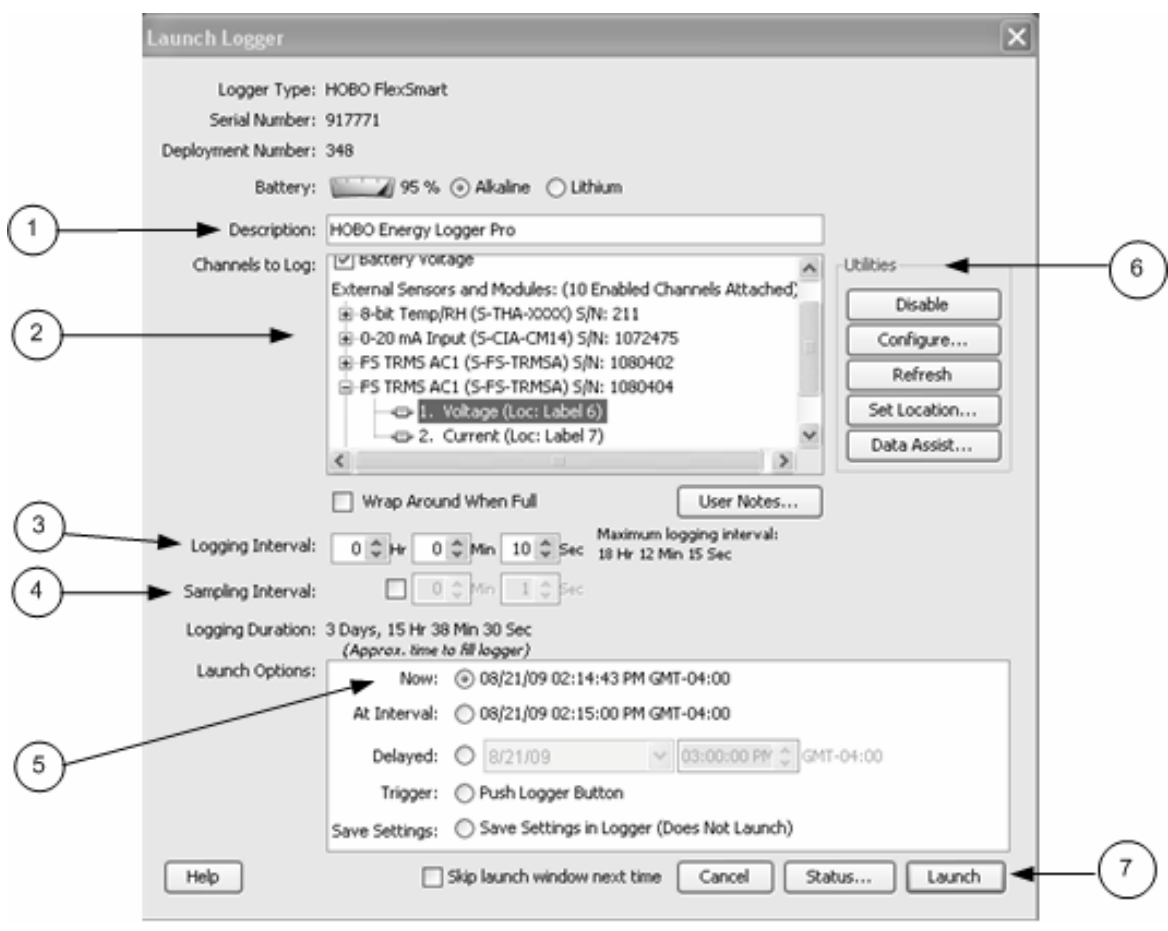
(**HOBOWare Pro**)

1. HOBOWare
2. 9- Keyspan™.
- 3.
4. HOBOWare. , COM1 (PC) Default (Macintosh), :

Windows: File > Preferences > Communications

Macintosh: HOBOWare Pro > *Preferences* > *Communications*

HOBOWare Pro



1. Description:
2. Channels to Log: / , .
3. Logging Interval: , (,),
4. Sampling Interval - (21 U30): ,
5. Launch Options: , , Now ().
6. Utilities - (HOBOflex Pro): , « , » , « »
7. Launch: **Launch**
HOBOflex

Status,



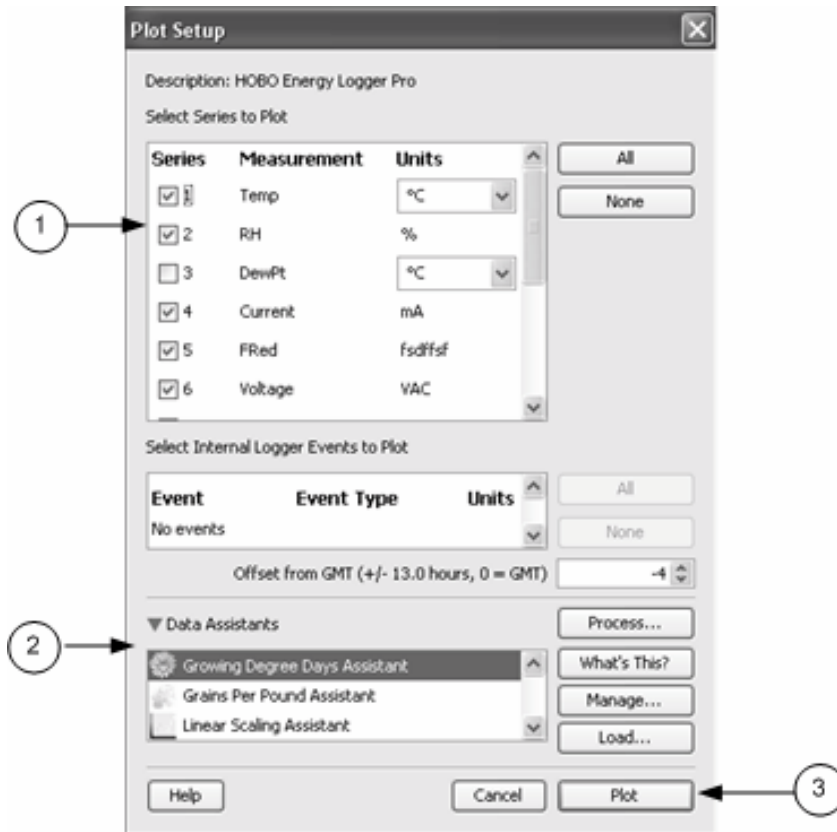
1. Device Identification:
2. Current Readings:
3. Device Details:

Change Current State

1. U,
2. Current States Status Button Down.
- 3.

1. ()
2. Status Status, OK.

- 1.
2. **Stop,** HOBOWare
HOBOWare
3. **Save.**



1. Select Series to Plot:

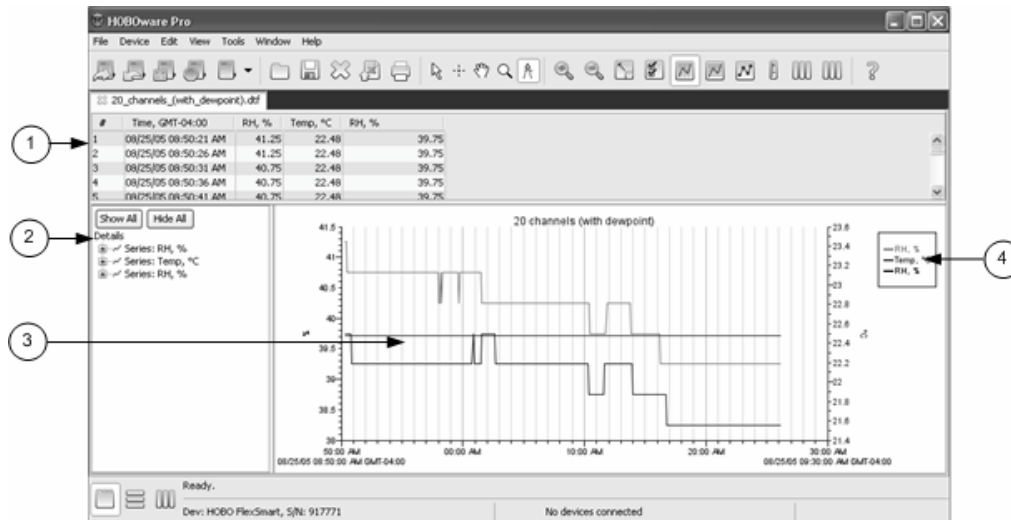
2. Data Assistant:

HOBOWare Pro

HOBOWare

3. Plot: **Plot**

Plot



1. Points Pane:
2. Details Pane:
3. Graph:
4. Legend:

Points Pane Details Pane HOBOWare Lite, : Preferences > Plotting > Points
 Table Details Pane.

HOBOWare.

!

Launch.

HOBOWare.